

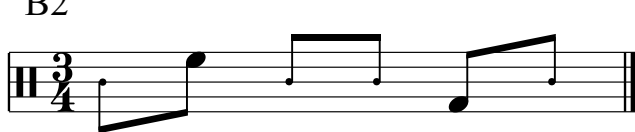
# Batterie Cours 18

Christian Couprie

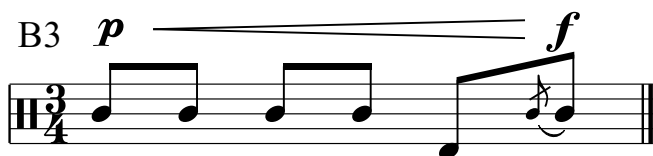
B1



B2



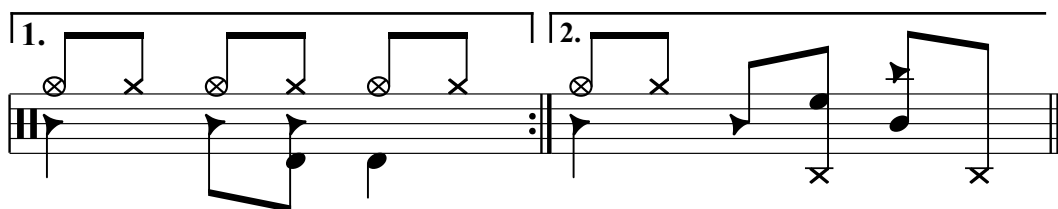
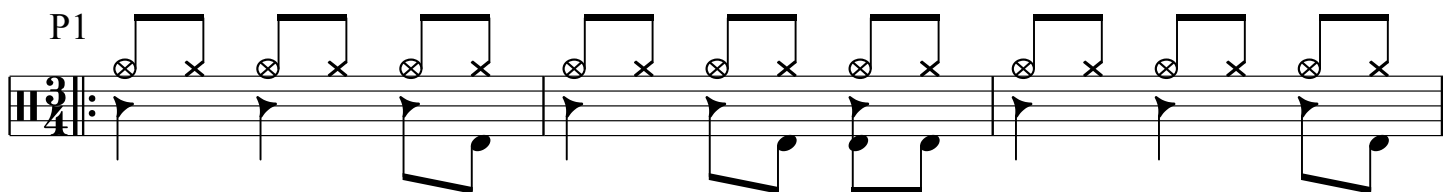
B3



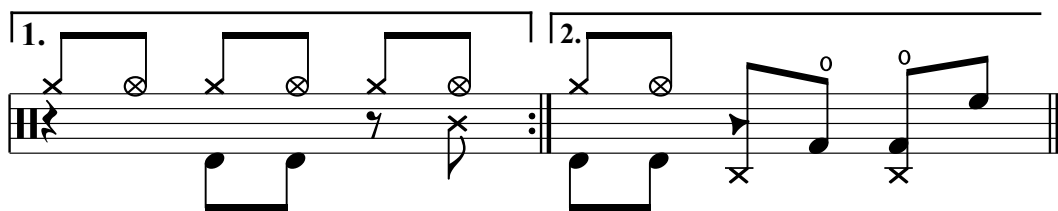
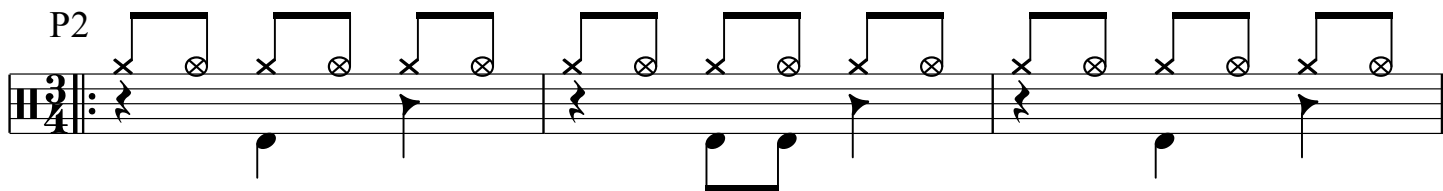
B4



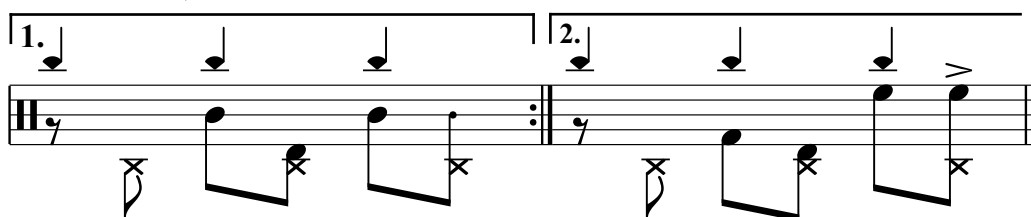
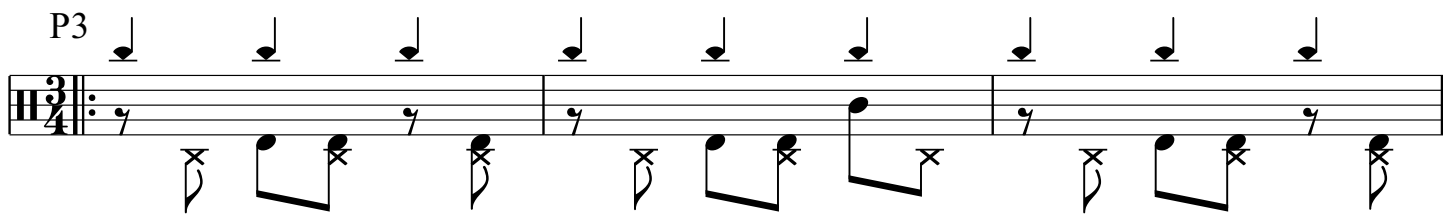
P1



P2



P3



P4

Musical notation for P4, first system. Treble clef, 3/4 time signature. The staff contains a sequence of notes: quarter, quarter, quarter, quarter, quarter, quarter, quarter, quarter, quarter, quarter, quarter, quarter. The bass staff shows chords with 'x' marks on the strings.

1. 2.

Musical notation for P4, second system. Treble clef, 3/4 time signature. First ending (1.) and second ending (2.) with repeat signs. The second ending includes a circled 'o' symbol.

P5

Musical notation for P5, first system. Treble clef, 3/4 time signature. The staff contains a sequence of notes: quarter, quarter, quarter, quarter, quarter, quarter, quarter, quarter, quarter, quarter, quarter, quarter. The bass staff shows chords with 'x' marks and some notes.

1. 2.

Musical notation for P5, second system. Treble clef, 3/4 time signature. First ending (1.) and second ending (2.) with repeat signs.

P6

Musical notation for P6, first system. Treble clef, 3/4 time signature. The staff contains a sequence of notes with accents (>) and 'x' marks. The bass staff shows chords with 'x' marks and some notes.

1. 2.

Musical notation for P6, second system. Treble clef, 3/4 time signature. First ending (1.) and second ending (2.) with repeat signs. The second ending includes a circled 'x' symbol.